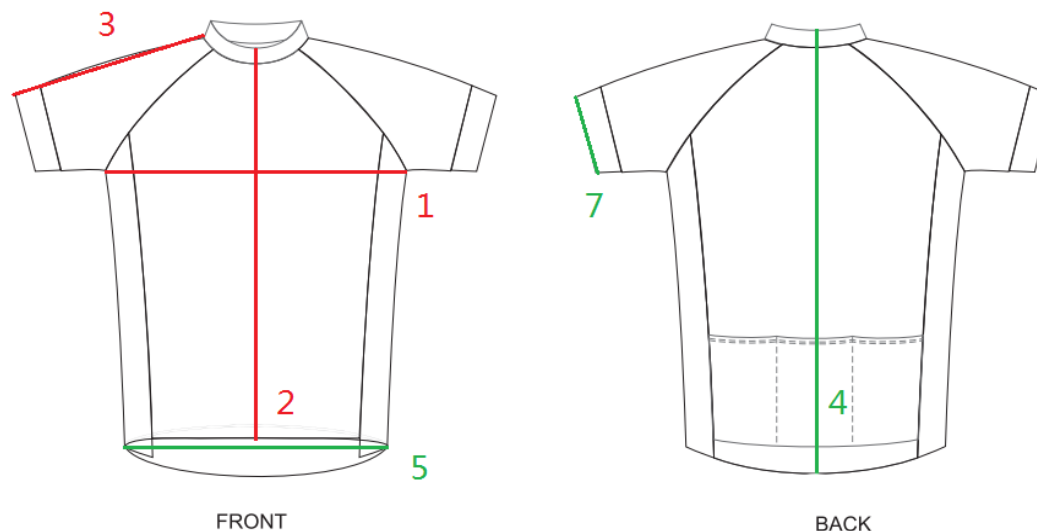


# SIZE CHART



## Mens Cycling Jersey



		S	M	L	XL	2XL	3XL
1	1/2 chest	47	49	51	53	55	57
2	front length	53	55	57	59	61	63
3	sleeve length	34	36	38	40	42	44
4	back length	67	69	71	73	75	77
5	1/2 bottom hem	33	35	37	39	41	43
6	1/2 sleeve width ( Power band )	11.5	12	12.5	13	13.5	14
	Suggestion height by cm	160-168	164-172	168-176	170-180	175-185	180-192
	Suggestion weight by Kg	50-55	55-65	65-72	72-80	80-90	90-99