

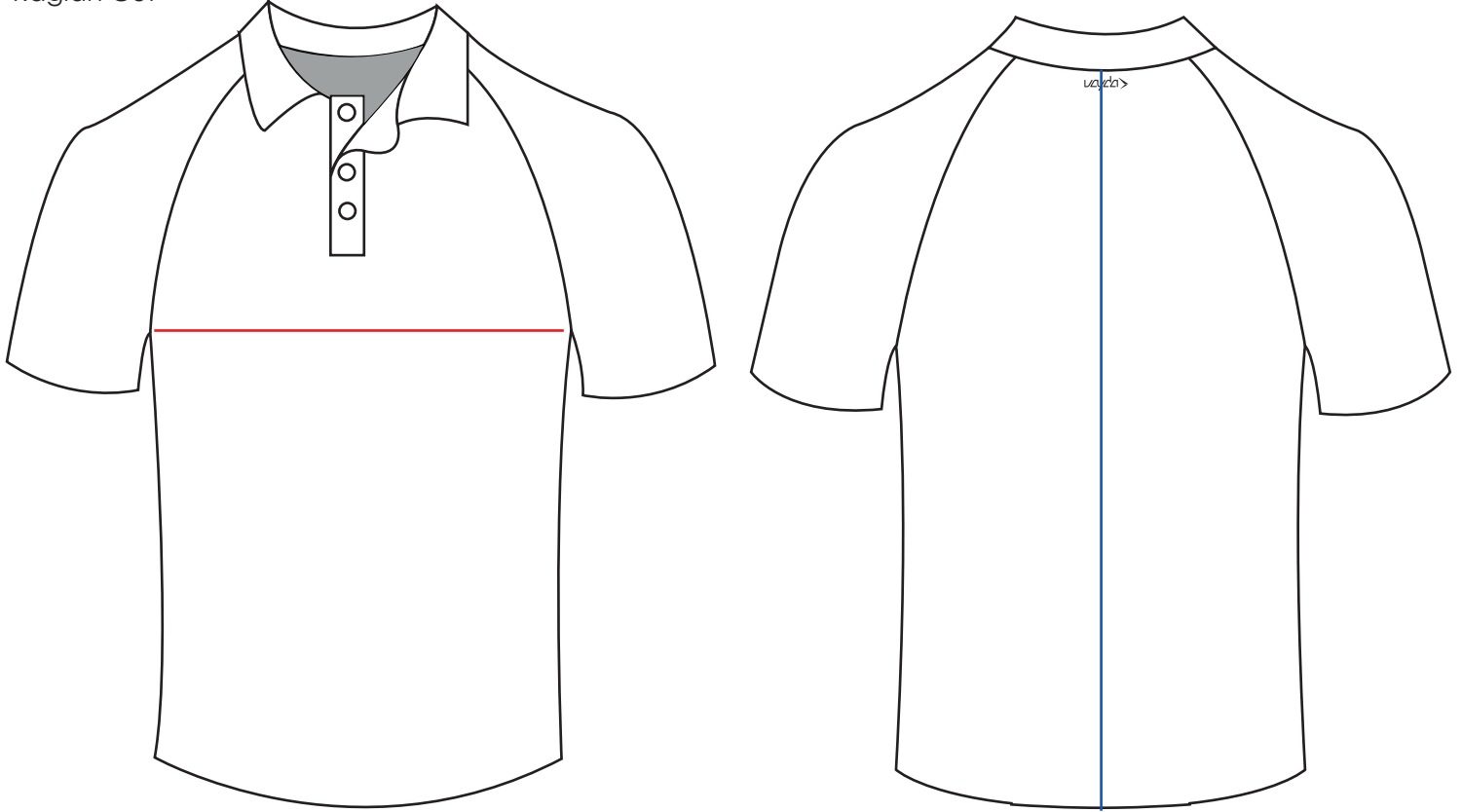
# SIZE CHART



## Polo Shirt

135gsm Birdseye Mesh or 140gsm Interlock

Raglan Cut



### Men's Cut

	XS	S	M	L	XL	2XL	3XL	4XL	5XL
<b>Chest 1/2</b>	52	54	56	58	60	63	66	69	71
<b>Length</b>	68	70	72	74	76	78	80	81	82

### Women's Cut

	6	8	10	12	14	16	18	20	22
<b>Chest 1/2</b>	42	44	47	49	52	54	57	60	63
<b>Length</b>	58	60	62	64	66	68	70	70	72

### Children's Cut

	7XS	6XS	5XS	4XS	3XS	2XS
<b>Chest 1/2</b>	40	42	44	46	48	50
<b>Length</b>	53	56	59	62	64	66

NOTE: All Measurements are in centimetres

Tolerance: +/- 2cm

**Measuring Instructions:** using a shirt you currently have that is correctly fitting, place the shirt on a flat surface and measure across the shirt (armpit to armpit) to determine the chest measurements. Use the size chart above to cross reference the measurement into the size matrix.